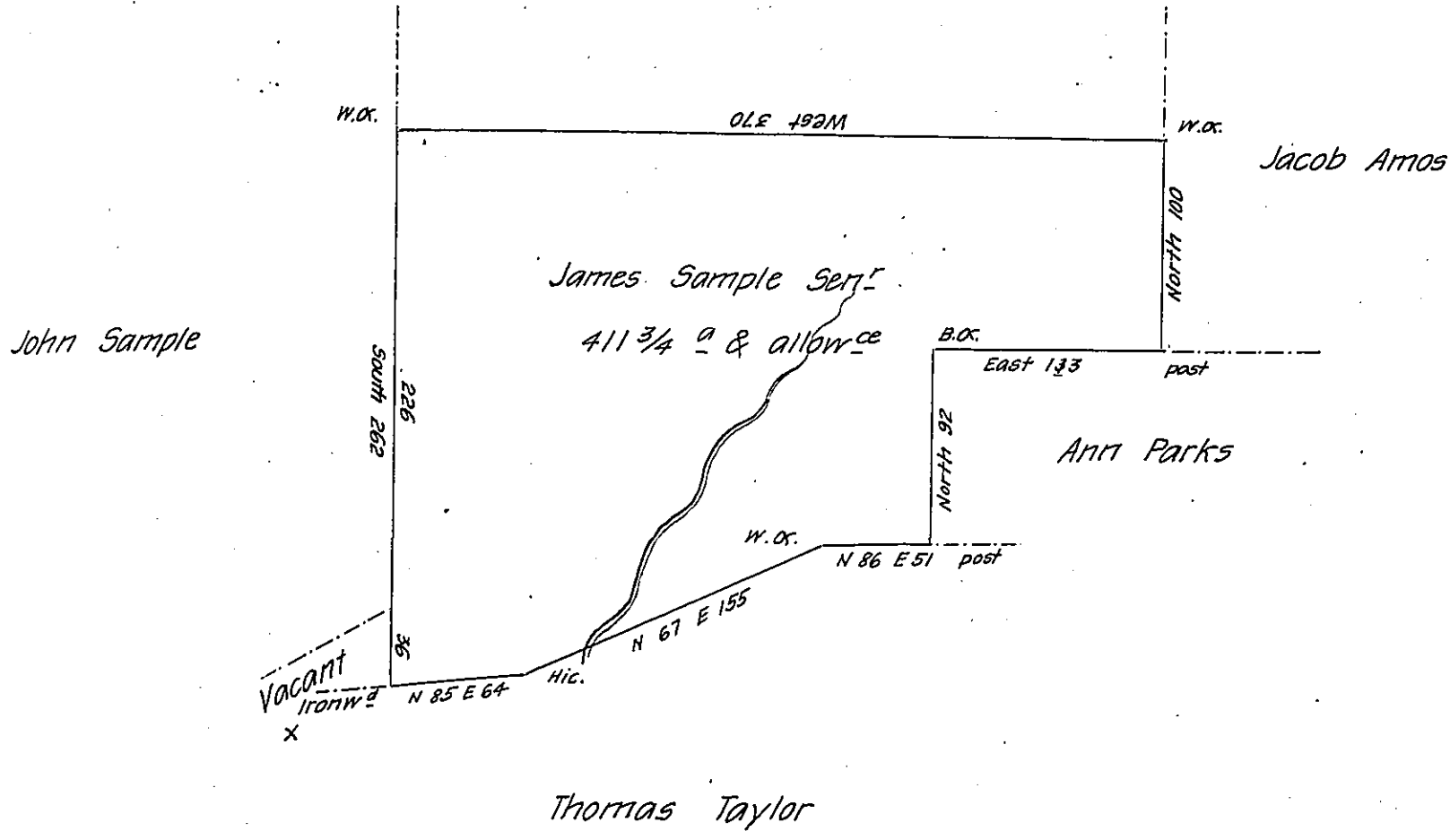


Mary Sample



Thomas Taylor

Survey'd to James Sample Senr on the 9th day of May 1786 the above described tract of four hundred & eleven acres & three quarters of an acre & allowance of six P. Cent. Situate on the waters of plumb creek bounded on the East by lands of Robert Elder & adjoining land of John Sample in Westmorland County By warrant of the 1st day of July 1784

Joshua Elder D.S.

Wt 101

John Lukens Esq

S. Genl

IN TESTIMONY that the above is a copy of the original remaining on file in the Department of Internal Affairs of Pennsylvania, made conformably to an Act of Assembly approved the 16th day of February, 1833, I have hereunto set my Hand and caused the Seal of said Department to be affixed at Harrisburg, this.....*eighteenth*.....day of.....*December*.....1906

Geo A. Jones
Secretary of Internal Affairs.